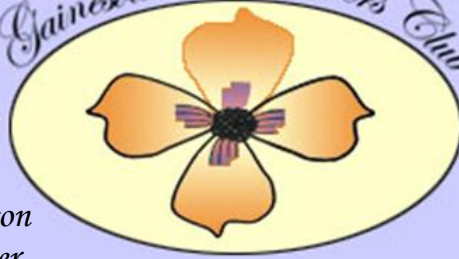


Gainesville Newcomers' Club

Welcome to the



Gainesville, Georgia

Editors: Jeannine Edmundson  
Sue Garcia & Betty Foster

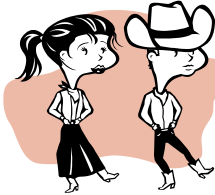
Webmaster: Mary DuVall  
www.gainesvillenewcomersclub.com

January 15, 2012

**Our Mission Statement:**  
*The purpose of this Club shall be to welcome newcomers  
and to be of service to the Community.*

**January 25th's Fitness 'N Fun Luncheon**

Doors Open: 10:15 am Meeting/Program starts: 10:45 am  
Luncheon cost: \$20 by check ~ not cash



A representative from the American Heart Association will give us tips on healthier meal planning and ideas for living better! Then .....we will welcome Kathy Hernandez who will demonstrate steps from several Western line dances and do some instructing with our group. She is a local expert who will encourage us to get up and move! **Be creative and come dressed in country western style!**

**PLEASE BRING SOCKS TO WEAR WHILE DANCING**

We will set up an area along the tables to try out our new dance steps! This should be fun, and a good way to begin the New Year!!

~MENU~

**Texas Style Barbecue Buffet**

- Garden Salad
- Smoked Brisket with Tia Maria Barbecue Sauce
- Smoked Spareribs with Cognac Barbecue Sauce
- Cole slaw with Margarita Vinaigrette
- Sweet Potato Salad with Pina colada Vinaigrette with Green onion, pecans and toasted coconut
- Texas Toast
- Apple and Peach Cobbler

**Happy New Year, dear friends!** I hope you all enjoyed a special holiday season with your loved ones and are looking forward to many blessings in the New Year. Can it possibly be 2012?

Your Newcomers' Board is working hard on an exciting year of programs and special events that I know will be enjoyed by all. I hope you are finding many interest groups in which to participate and expanding your horizons with such a wonderful group of ladies! We are hoping to have the Fashion Show in the Fall but are really needing 2 or 3 leaders to step forward and start getting organized if this is going to happen. It is a lot of fun and such a great way to get to know others in the club ~ we already have many helpers on hand so please consider leading this event. Just contact a Board member if you would like to help chair. I look forward to seeing you January 25th at the luncheon!

Cheers, Patsy



## February Birthdays



PAT BURSTON	February 1
LAURIE SEITZ	February 2
KAROLE REEVES	February 3
ROSEMARIE OROBONA	February 6
MARY DUVALL	February 10
SARAH GALSHACK	February 11
NANCY BAUMGARDNER	February 11
VIVIAN STEPHENS	February 14
CHRISTIE DALRYMPLE	February 18
KATHY PROTERRA	February 18
JULIE MANGUART	February 19
PAULA PILGRIM	February 20
MARSHA DEMPSEY	February 20
BONNIE HARTWIG	February 22
JUNE GRIMES	February 24
AMY SCHICK	February 26
JOYCE GIESEGH	February 28

## Member News

### 3 New Members in December:

Judy Canonico  
Hilary Gronas  
Mary Transue

New members will be wearing special "orange" name tags to help us identify them. Please welcome them!

### Member Care Cards:

Louise Barnett ~ death of husband  
Beth Andert ~ death of husband  
Please let Zella Walsh, Corresponding Secretary, know when a member is in need of a card.



### Board Meeting:

The next Board meeting will be held on February 7th, 3rd floor of the Peach State Bank, Washington Street, Gainesville. Refreshments served at 9:00 am; meeting starts at 9:30 am.

### BUY YOUR 50/50 DRAWING TICKETS

at each luncheon. Proceeds go to our Community Outreach.



## MAY'S SPECIAL EVENT!

## SOCK HOP

This will be held at the Yonah Dining Hall at Brenau University on May 11th. The committee is in need of a few old vinyl records to be used as decorations. (They will not be returned.) Call Pinky Pearce.

# Community Service News

A special thanks to all our members for successful clothing, canned goods, and stocking drives. Your participation made a big difference in the lives of people in our community and provided a little brighter Christmas for many.

## Valentine's Day at the Senior Center:

Newcomers will sponsor a Valentine's Day Luncheon for seniors at the Gainesville Senior Center on Valentine's Day, the 14th of February. We purchase the food for the luncheon and serve it to seniors. We make this a very festive occasion complete with entertainment and table decorations. It is delightful to see the smiles on the faces of the seniors as they enjoy the good food, entertainment, and extra attention they receive from our volunteers. Please come and join the fun.

We need your help to make it happen! Sign up to work in the kitchen to prepare for the luncheon beginning at 10:00 am or to serve the food at 11:30 am. The signup sheets will be available at the January luncheon. You may email Fran Watkins also to get your name on the list!



## Panties in a Wad

Watch for more information about this event. We are in the process of planning it and will announce the details very soon!



**Meals on Wheels:** We collected \$212.72 at the December luncheon.

Committee: Fran Watkins, Annette Hinton, Sally Hake, Mary Jane McDevitt



## February Luncheon—MARDI GRAS! Laissez les bons temps rouler! "Let the good times roll!"

Our February 22, 2012 luncheon takes place the day after Mardi Gras. Be ready to party! Our speakers will be Jeanne Dufour who was born on Mardi Gras Day and was raised in New Orleans. She will share with us her Mardi Gras experiences and give us the history of the biggest annual event in New Orleans. Patty Phillips, owner of the Calliope Sweets Bakery in downtown Flowery Branch, will tell us about the King Cake and its significance.

Buffet  
Audouille Chicken Gumbo  
Mixed Greens Salad Bowl  
Crawfish Etoufee  
Turkey Jambalaya  
Jalapeno Cornbread  
Fried Whole Okra, Black Eyed Peas  
Penne Pasta with Tarragon Pesto  
Rice Pudding with Cranberries and Raisins

## Gainesville Newcomers' Club

### NOTE:

*We are trying to make the newsletter more compact, and give only essential or changing information. We will be placing the day and time of every group's meeting on the calendar so you can print it out and use that as a reference.*

*Our website will keep a current description of each Interest group and its contact persons at [www.gainesvillenewcomersclub.com](http://www.gainesvillenewcomersclub.com)*



## INTEREST GROUPS

Late January– End of February

*The leader's telephone and email information can be found in the GNC Membership Directory.*

### Antique Exploring: Nona Stacks or Patsy Viles

On Thursday, February 9th, we will travel to Alpharetta in search of treasures. Time and place to meet will be sent in an email reminder. Contact Nona or Patsy for information.

### Bridge for Couples: Rosalie Minnich or Jeanie Para

Couples Bridge meets 1st, 2nd **or** 3rd Friday each month for a social evening of Bridge. Contact Rosalie or Jeanie for more information on openings and schedules.



### Bridge for Ladies: Pam Cohan

Ladies Bridge meets on the 3rd Monday of each month at 10:00 am at O'Charley's on Browns Bridge Road. Contact Pam for openings and details.

### Bunko (Daytime): Coral Gleason

Bunko is held on the first Wednesday of each month. We will meet at 9:30 am on February 1st at Panera Bread Café on Dawsonville Highway. Come join the fun. Any questions, contact Coral Gleason.

### Bunko (Evening): Pat Shockey or Sandy Murphy

Evening Bunko will NOT meet in February.

### Cultural Arts & Events : Patricia Louko

So much happening in and around Gainesville. Ask Patricia to add you to her mailing list for monthly updates. Two examples: On February 14-25, GTA presents "The Grapes of Wrath." For more information, go to [www.gainesvilletheateralliance.org](http://www.gainesvilletheateralliance.org); February 28, Gainesville Care Center's annual Banquet Fundraiser will be held at the First Baptist Church Banquet Hall, see [www.gainesvillecarepartners.org](http://www.gainesvillecarepartners.org).

### Dining Out : Eleanor Coppedge or Judie Meyer

Our group will be going to Luciano's Italian Restaurant on Thursday, February 16th. The restaurant is located on Sugarloaf Parkway in Duluth. It is an excellent Italian restaurant. Don't miss it! Please make reservations with Eleanor Coppedge or Judie Meyer by Monday, February 13th. We will meet at the restaurant at 6:30 pm. Visit their website [www.lucianoitaly.com](http://www.lucianoitaly.com).

### Dominoes-Mexican Train: Pinky Pearce or Dana Carlson

This group plays twice a month at Pueblo's Restaurant, 1310 Dawsonville Highway. They play the first Tuesday at 5:30 pm and on the first Thursday of each month at 10:30 am. Contact Pinky Pearce or Dana Carlson for additional information.

## Gainesville Newcomers' Club

### Gardening: Michele Canfield

Gardening group will meet on Monday, February 6th at 10:00 am for a trip to North Georgia. We will visit some pottery spots and have lunch in the area. I will need to have firm reservations in advance. Our meeting spot will be the parking lot of J&J Grocery on Limestone Parkway. More information will be sent by email.

### Golf: Peggy Barfield

We will NOT meet in February. When the weather is warmer in March or April, we will resume play.

### Gourmet for Couples: Ann Curry or Rita Toomey

Please contact Ann Curry or Rita Toomey to join a formed group.

### Grandma's Closet: Judie Meyer

Need health/medical equipment or children's port-a-cribs, car seats, etc? See our website for a complete description of this great network of sharing.

### Hiking Group: Jenny Kitchens and Pat DeNote

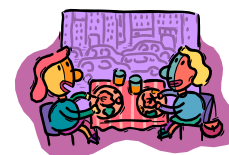
There is more to the Tallulah Basin Region than just the Gorge and Falls. River Trail has an interesting view of the river that most people overlook. This highly scenic trail features some of the largest Eastern White Pines in the state. Along the trail looms the backdrop of the huge boulders and cascading waters. The hike is about 2 miles total hiking distance in and back and is rated "easy". We plan to visit the quaint town of Clayton and eat lunch at one of their unique restaurants. Please wear appropriate hiking shoes and layered clothing to suit the winter weather. Bring money for the driver (\$7 cash), and lunch money. Don't forget to bring water, a snack, and a hiking stick. We will meet at J&J Foods on Limestone Parkway at 9:30 am. Please email or telephone Jenny or Pat by Sunday, February 12th if you plan to enjoy this winter outing!

### Lunch Bunch: Pat Munhall or Lois Shoemaker

The GNC Lunch Bunch group will NOT meet in February.

### Mah Jong: Ruth Johnson

The Mah Jong Group meets on the second and fourth Mondays of each month. Both the American and Chinese version are played. We will meet on February 13th and February 27th. Contact Carol Krider for additional information.



### Morning Coffee: Rosemary Munsen or Judie Meyer

Morning Coffee will be held at 10:00 am on Wednesday, February 8th, at the home of Patsy Amidei. Call Rosemary or Judie for additional information.

### Reading Group: Gertrud Rocco \*Time Change\*

The Reading Group will meet Thursday, February 16th at 1:30 pm at the Hall Book Exchange located at 1854 Thompson Bridge Road, Gainesville. We will discuss Franklin and Eleanor by Joseph Nash or by Hazel Rowley and compare the two books. Come join us! Contact Gertrud for details.

### Sun, Sail & Ale: Renee Bernstein

Very exciting and quickly approaching is the Sun, Sail & Ale **Super Bowl Party**. It will be February 5th at Gerda Baitis' and Chad Kingman's home. Start time is 5:30 pm with kick-off at 6:30 pm. Last names beginning with A-M, please bring appetizers to share; names N-Z bring desserts. Also bring your own drinks. This is really a "special" gathering, so please join us and RSVP to Gerda by February 1st. Hope to see you then. Their house is perfect for the Super Bowl and the energy is contagious!

## Gainesville Newcomers' Club

### Warm Up America : Amy Schick

As we begin the New Year, let's make a commitment to do more Community Service Projects ~ make your commitment and come to the January 17th and/or February 21st Warm up America workshops. We knit or crochet baby items for Newborns in Need and large afghans for disaster victims. We start at 10:00 am for work for about 2 hours. We can teach you a new skill or refresh an old one. Call Amy for more information.

### Wine Explorers : Joan Gordon

\*February Event\* will be a Private Wine & Chocolate Tasting at Three Sisters Winery in Dahlonega on Monday, February 6th starting at 2:00 pm. The \$25 fee is all inclusive and will include six of their wines plus a barrel tasting, keepsake wine glass, and three artisan chocolates paired with three of the wines.

**Space is limited so book early.** Reservation and payment must be made by Friday, January 18th (make checks out to Joan Gordon). Carpooling will be arranged. If we don't have enough GNC members to meet the minimum required by the Winery by January 18th, Joan will cancel this as a GNC event and open the reservations to non-members. Please let Joan know if you are not receiving the group emails.



# Thank You

To **Peach State Bank** who provides new members with a welcome package and lunch the day they join and has generously helped underwrite the costs of our Annual Fashion Show.

To **Joyce Merck Florist** who provides the beautiful corsages for our new members.

To **Gainesville's Belk Department Store** for their great support throughout the year.

To **Gainesville Whiteprint/Applied Images** for all our printing needs.

Contact these supporters to see how they may help you personally.

[www.peachstatebank.com](http://www.peachstatebank.com)

[www.joycemerckflorist.com](http://www.joycemerckflorist.com)

[www.belk.com](http://www.belk.com)

[www.aimages.com](http://www.aimages.com)

# February 2012

SUNDAY	MONDAY	TUESDAY	WEDNESDAY	THURSDAY	FRIDAY	SAT.
			<b>1</b> <u>Bunko</u> (Daytime) 9:30 am	<b>2</b> <u>Mexican Train</u> 10:30 am	<b>3</b> <u>Couples</u> <u>Bridge</u> (1)	<b>4</b>
<b>5</b>  <u>Sun. Sail &amp; Ale</u> <u>Super Bowl Party</u> 5:30 pm	<b>6</b> <u>Gardening</u> 10:00 am  <u>Wine Explorers</u>  <u>No Bunko</u> (Evening)	<b>7</b> <u>Board Meeting</u> 9:00 am (social) 9:30 am (mtg) <u>Mexican Train</u> 5:30 pm <u>Newsletter</u> <u>Articles Due</u>	<b>8</b> <u>Morning</u> <u>Coffee</u> 10:00 am	<b>9</b> <u>Antique</u> <u>Explorers</u>	<b>10</b> <u>Couples</u> <u>Bridge</u> (2)	<b>11</b>
<b>12</b>	<b>13</b> <u>Mah Jong</u> 1:00 pm	<b>14</b>  <u>Hiking</u> 9:30 am <u>No Lunch Bunch</u>  <u>Valentine's Day</u> <u>at Senior Center</u>	<b>15</b>	<b>16</b> <u>Dining Out</u> 6:30 pm  <u>Reading Group</u> 1:30 pm	<b>17</b> <u>Couples</u> <u>Bridge</u> (3)  <u>Deadline for</u> <u>Luncheon</u> <u>Reservations</u>	<b>18</b>
<b>19</b>	<b>20</b> <u>Ladies Bridge</u> 10:00 am	<b>21</b> <u>Warm Up</u> <u>America</u> 10:00 am	<b>22</b> <u>GNC</u> <u>Luncheon</u>  <u>Doors open</u> <u>at 10:15 am</u>	<b>23</b>	<b>24</b>	<b>25</b>
<b>26</b>	<b>27</b> <u>Mah Jong</u> 1:00 pm	<b>28</b>	<b>29</b>			